



THE FUTURE-READY PROFESSIONAL

PERSONAL EFFECTIVENESS FOR THE
MODERN WORKPLACE



OVERVIEW

What makes Management Drives truly unique is that it doesn't just look at behaviours or skills like many leadership, psychometric or culture tools do. It goes deeper into the intrinsic motivations of people (what truly drives them), and then connects those individual drives to team dynamics and organisational culture.

Grounded in the Management Drives behavioural insight framework, this course helps participants understand why they behave the way they do, and how to adapt their behaviour for greater effectiveness, influence, and career growth.



Program Objectives

- Strengthen personal effectiveness in professional environments
- Build self-awareness through behavioural insight
- Improve communication across teams and stakeholders
- Develop productivity, focus, and time management skills
- Encourage ownership, initiative, and accountability
- Support early career acceleration and confidence building

Who is it for?

- Early-career professionals (0–5 years experience)
- Recent graduates transitioning into the workforce
- Junior to mid-level employees seeking growth
- High-potential talent in development programmes
- Individuals preparing for leadership pathways

WHAT MAKES THIS PROGRAMME DIFFERENT

Unlike traditional workplace training, this programme goes beyond theory.

It focuses on:

- Behaviour, not just skills
- Awareness, not just instructions
- Application, not just knowledge

Through the Management Drives framework, participants gain deep insight into:

- What motivates them
- How they respond under pressure
- How they interact with others
- How to shift behaviour for better outcomes

This creates lasting behavioural change, not temporary learning.

WHAT PARTICIPANTS WILL GAIN

By the end of the programme, participants will be able to:



Self-Awareness & Behaviour

- Understand their personal drivers and motivations
- Recognise behavioural strengths and blind spots
- Improve adaptability in different work situations



Communication & Influence

- Communicate clearly with colleagues and leaders
- Listen actively and respond with intention
- Handle feedback and workplace conversations professionally



Productivity & Performance

- Manage time and priorities effectively
- Reduce distractions and improve focus
- Deliver tasks with consistency and accountability

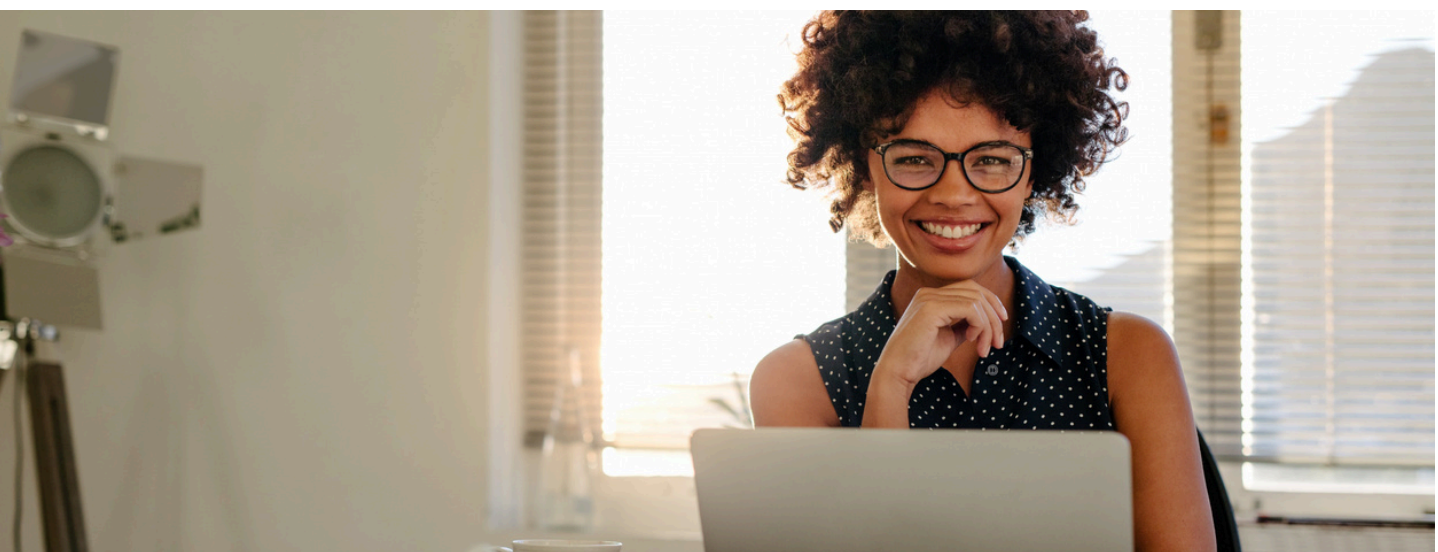


Career Ownership

- Take initiative without waiting for instructions
- Build a proactive career development mindset
- Create a structured 90-day growth action plan

KEY LEARNING THEMES

- Self-awareness & motivation (Management Drives)
- Emotional intelligence in the workplace
- Communication effectiveness and clarity
- Productivity systems and time management
- Accountability and ownership mindset
- Professional identity and career direction
- Growth mindset and adaptability in change



DELIVERY FORMAT

The programme is designed for flexibility and impact:

Standard Delivery

- 2-day instructor-led workshop
- Interactive exercises, reflection, and group activities
- Real workplace scenarios and case discussions

Accelerated Option

- 1-day intensive version for time-sensitive cohorts

Pre-Work Assessment

- Behavioural diagnostic (Management Drives-based)
- Personal reflection questionnaire

Optional Coaching Support

- 1-to-1 coaching (3 sessions recommended)
- Personalised development feedback
- Career planning and behavioural growth support



LEARNING EXPERIENCE DESIGN

Participants will engage in:

- Interactive discussions and group collaboration
- Self-reflection and behavioural mapping
- Real-life workplace simulations
- Practical tools and frameworks
- Action planning and accountability structures

This ensures learning is not only understood — but applied immediately.

PROGRAM OUTCOMES

Upon completion, participants will be able to:

- Perform more effectively in their roles
- Communicate with clarity and confidence
- Take ownership of tasks and outcomes
- Work more collaboratively across teams
- Manage themselves in fast-paced environments
- Demonstrate readiness for career advancement

ORGANISATIONAL VALUE

For organisations, this programme helps to:

- Improve employee productivity and engagement
- Reduce performance gaps in early-career talent
- Strengthen workplace communication culture
- Accelerate readiness for leadership pipelines
- Build self-driven, accountable team members
- Increase retention through personal development investment



The Future-Ready Professional is a foundational development programme designed to equip early-career and emerging professionals with the mindset, behaviours, and practical skills required to thrive in modern workplaces.

It builds the essential capabilities employers expect but rarely formally teach — combining self-awareness, communication, productivity, and career ownership into one integrated development experience.

Inspired Concepts Consulting
www.inspiredconceptsconsulting.co.uk
Tel: +44 7939214923, +02070626742
info@inspiredconceptsconsulting.co.uk



Inspired Concepts Academy

**Develop your people . Strengthen Your Teams.
Drive Organisational Performance**

